

7/25/2012

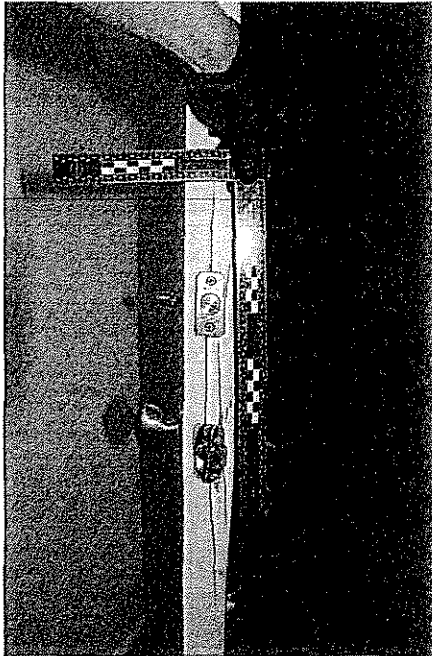
## Continuation Form

Case No. 12-03216

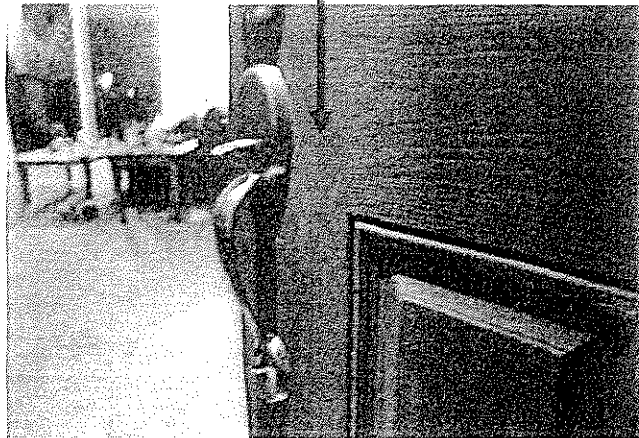
West Sacramento Police Department,

No. of Pages 7

1 The front door of the residence was opened and showed signs of forced entry. The lock plate was  
2 broken and a large crack split the surrounding wood. A corresponding partial boot mark was on the exterior  
3 of the door near the dead bolt area and door handle. The boot impression was believed to have been left by  
4 Officer Wright. See below images.  
5



Partial boot impression collected under  
oblique lighting



## INTERIOR SCENE

6  
7  
8  
9  
10  
11  
12 The lower floor of the residence had an open style, with a living room, kitchen, and dining area only  
13 separated by partial walls. The large furniture in the living room consisted of a couch, arm chair, desk with  
14 filing cabinet, and a coffee and end table. The flooring in the living room was partially tiled (around the  
15 front door) and carpeted (brown). I observed blood on the tile and carpet approximately 6 feet, 10 inches  
16 northeast of the front door.  
17

18 A blue vase with flowers was lying on the carpet near the couch and end table. There was spilled  
19 water on the carpet around the vase. Two plates of food and three drink containers were on the coffee and  
20 end tables. The television was on and the volume was at a moderate level.  
21  
22  
23  
24  
25  
26  
27

Reporting Officer R. Pagano #253	Initials T. Sockman	Date & Time 7/25/2012 10:51 AM	Page 4
Reviewed By T. Sockman	T. Sockman	Date & Time 7/25/2012 11:00	000068